

DENOMINATION:

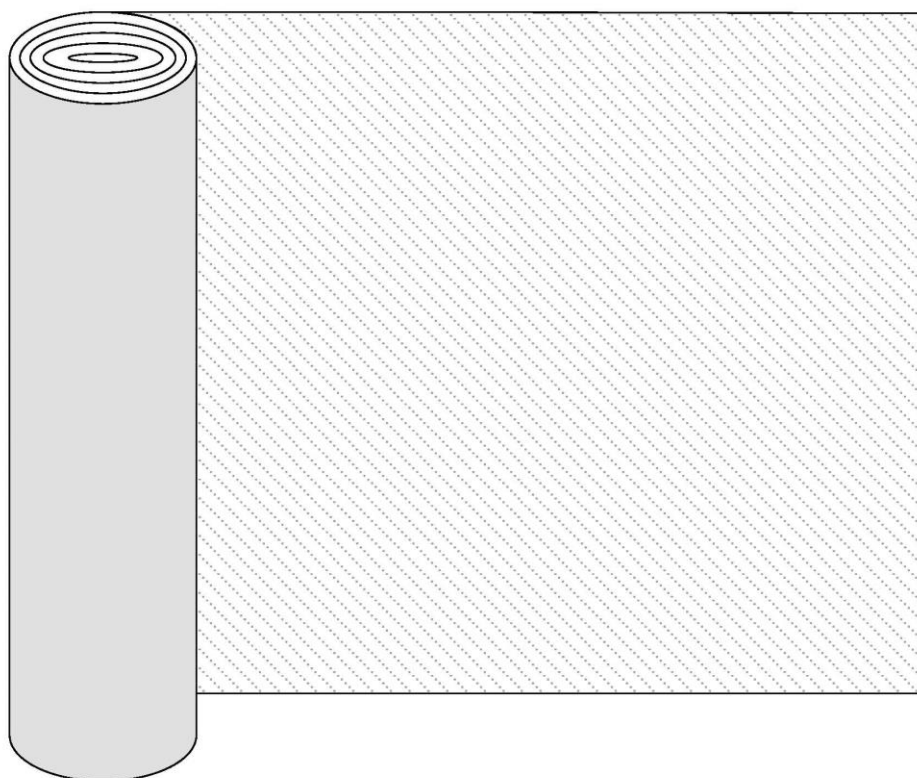
POISfelt

DESCRIPTION:

Feutrine anti-réverbération absorbant phonique

APPLICATIONS:

- Pose murale avec colle ou adhésif double-face
- Pose sur plafond avec colle ou adhésif double-face
- Pose sur mobilier avec colle ou adhésif double-face
- Rideaux



DIMENSIONS:

- Longueur (min.) **2500** x H \pm **146** cm x ÉPAIS **4,5** mm (**3 + 1,5** mm)

NOTE: *A la coupe sur demande*

POIDS:

Épaisseur (+/-)	Poids
• 4,5 mm	1100 gr/mtl

COMPOSITION:

- **ECOfelt** - 90% laine, 10% polyester
- **PETfelt** - 100% PET

DIFFERENCES DE TEINTE:

De légères différences de coloris entre les bains de teinture sont considérés comme normaux

COLORIS DISPONIBLES:

D'autres combinaisons entre ECOfelt et PETfelt sont possibles sur demande

RECYCLAGE:

- **ECOfelt:** Textile écologique de feutre de laine naturelle, recyclable dans le respect de l'environnement
- **PETfelt:** Matériau fabriqué du recyclage des bouteilles, recyclable dans le respect de l'environnement

ENTRETIEN:

Utilisez régulièrement l'aspirateur avec un bec lisse ou utilisez des brosses à poils doux ou des détergents professionnels pour les textiles d'ameublement



CERTIFICATIONS:

• **RÉACTION AU FEU UE:**

B-s2, d0 – *EN OPTION*



• **RÉACTION AU FEU USA:**

Class A - ASTM E 84-18 - *EN OPTION*



• **CERTIFICAT ACOUSTIQUE:**

UNI EN ISO 354: 2003

UNI EN ISO 11654: 1998

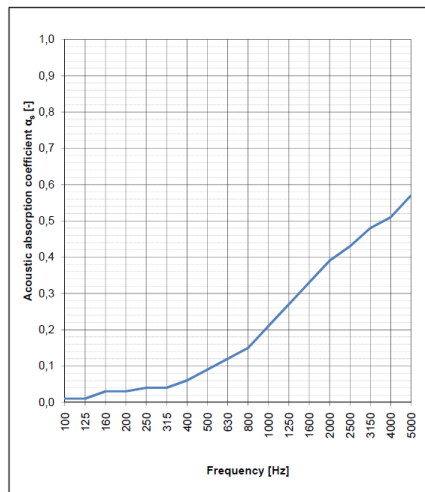


Felt (EPAIS 4,5 mm):

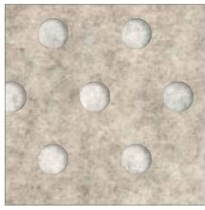
Sample description: Fabric for surface, wall ceiling furniture application, Model "Feltro 4.5 mm"
Mounting Type: A

Sample area: 11.52 m²
Reverberation room volume: 161.3 m³

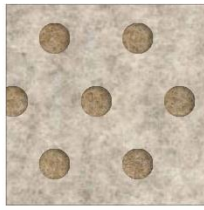
f [Hz]	αs [-]
Frequency	Acoustic absorption coefficient values
100	0.01
125	0.01
160	0.03
200	0.03
250	0.04
315	0.04
400	0.06
500	0.09
630	0.12
800	0.15
1000	0.21
1250	0.27
1600	0.33
2000	0.39
2500	0.43
3150	0.48
4000	0.51
5000	0.57



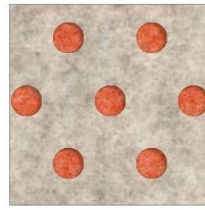
Evaluation based on laboratory measurement results by means of a technical method.



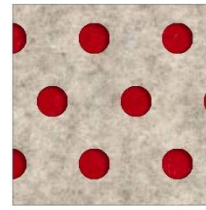
top: Beige 952
low: Ghost white 955



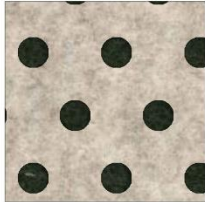
top: Beige 952
low: Caramel 332E



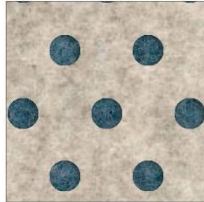
top: Beige 952
low: Salmon 317



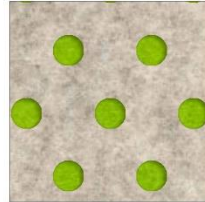
top: Beige 952
low: Red 5



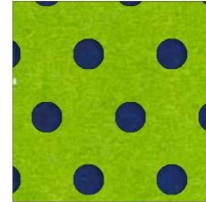
top: Beige 952
low: Dark musk 22E



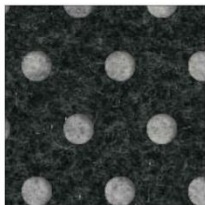
top: Beige 952
low: Avio 333E



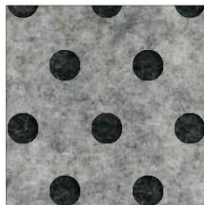
top: Beige 952
low: Acid green 611E



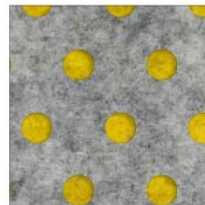
top: Acid green 611E
low: Deep sea blue 963



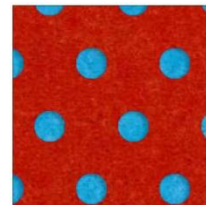
top: Dark grey 923
low: Grey 953



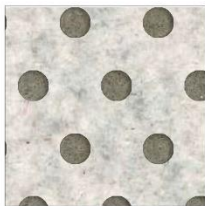
top: Grey 953
low: Dark grey 923



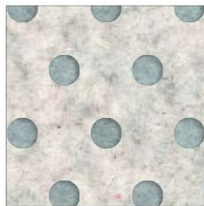
top: Grey 953
low: Yellow 34



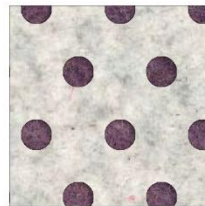
top: Orange 971
low: Light blue 8



top: Ghost white 955
low: Mushroom 325



top: Ghost white 955
low: Fresh air 976



top: Ghost white 955
low: Amethyst 330



top: Ghost white 955
low: Cashmere green 89

