

NAME:

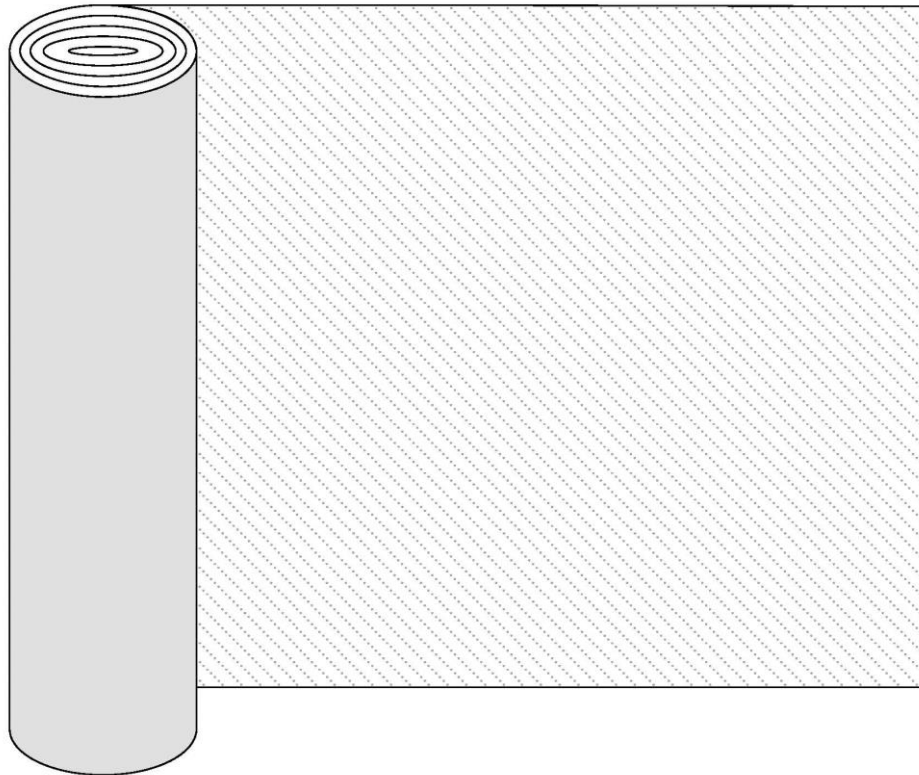
POISfelt

DESCRIPTION:

Sound-absorbing and anti-reverberation layers

APPLICATIONS:

- Wall with glue or double sided tape
- Ceiling with glue or double sided tape
- Furniture with glue or double sided tape
- Curtains



DIMENSIONS:

- Lunghezza (min.) **2500 x H ± 146 cm x THK 4,5 mm (3 + 1,5 mm)**
- Length (min.) **984.25 x H 59 in x THK 0.18 in (0.12 | 0.06 in)**

NOTE: *Custom cuts on request*

WEIGHT:

Thickness (+/-)	Weight
• 4,5 mm	1100 gr/mtl
• 0.18 in	0.73 lb/ft

COMPOSITION:

- **ECOfelt** - 90% wool, 10% polyester
- **PETfelt** - 100% PET

COLOR DIFFERENCES:

Slight differences between dyeing lots are considered normal

AVAILABLE COLOURS:

Further combinations between ECOfelt and PETfelt are available on request

RECYCLABILITY:

- **ECOfelt:** Textile ecology of natural wool felts
- **PETfelt:** Material made from recycled plastic bottles, recyclable product respecting the environment

MAINTENANCE:

Regularly and carefully use the vacuum cleaner with a smooth spout, or use soft bristle brushes or professional pads for padding and upholstery



CERTIFICATIONS:

• **FIRE REACTION CLASS UE:**

B-s2, d0 - *OPTIONAL*



• **FIRE REACTION CLASS USA:**

Class A - ASTM E 84-18 - *OPTIONAL*



• **SOUND ABSORPTION REPORT:**

UNI EN ISO 354: 2003

UNI EN ISO 11654: 1998

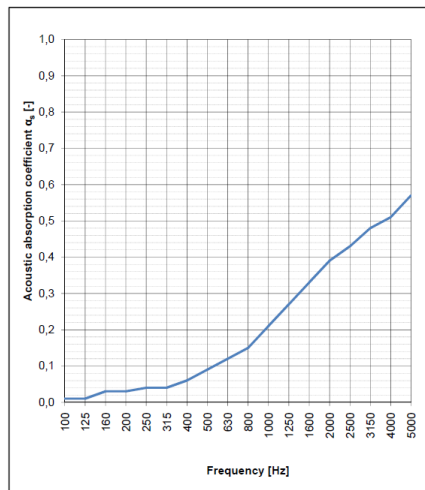


Felt (THK 4,5 mm | 0.18 in):

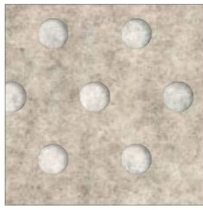
Sample description: Fabric for surface, wall ceiling furniture application, Model "Feltro 4.5 mm"
Mounting Type: A

Sample area: 11.52 m²
Reverberation room volume: 161.3 m³

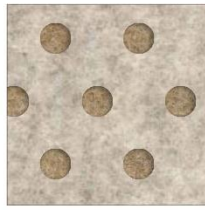
f [Hz]	αs [-]
Frequency	Acoustic absorption coefficient values
100	0.01
125	0.01
160	0.03
200	0.03
250	0.04
315	0.04
400	0.06
500	0.09
630	0.12
800	0.15
1000	0.21
1250	0.27
1600	0.33
2000	0.39
2500	0.43
3150	0.48
4000	0.51
5000	0.57



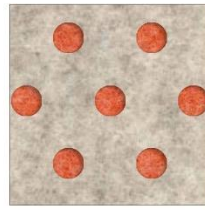
Evaluation based on laboratory measurement results by means of a technical method.



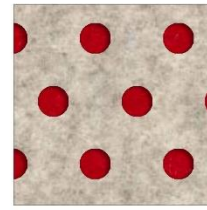
top: Beige 952
low: Ghost white 955



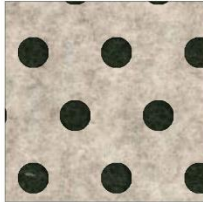
top: Beige 952
low: Caramel 332E



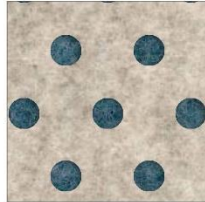
top: Beige 952
low: Salmon 317



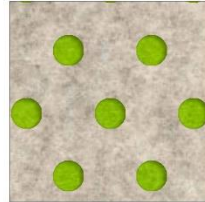
top: Beige 952
low: Red 5



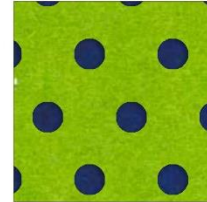
top: Beige 952
low: Dark musk 22E



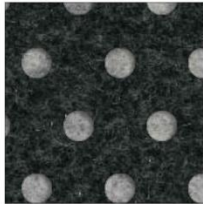
top: Beige 952
low: Avio 333E



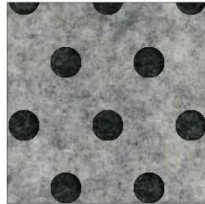
top: Beige 952
low: Acid green 611E



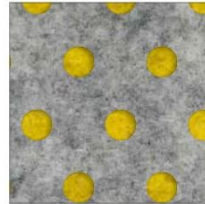
top: Acid green 611E
low: Deep sea blue 963



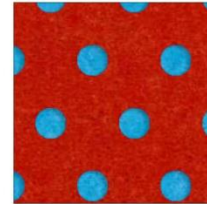
top: Dark grey 923
low: Grey 953



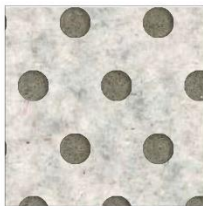
top: Grey 953
low: Dark grey 923



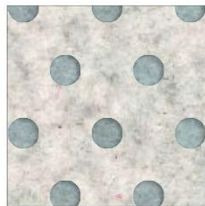
top: Grey 953
low: Yellow 34



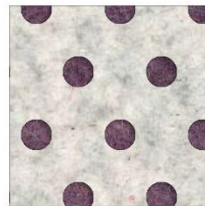
top: Orange 971
low: Light blue 8



top: Ghost white 955
low: Mushroom 325



top: Ghost white 955
low: Fresh air 976



top: Ghost white 955
low: Amethyst 330



top: Ghost white 955
low: Cashmere green 89

